

SUMMARY OF WORK

HIGH SCHOOL:

1. Replacement of the roof valley with a modified base sheet and fluid applied cap sheet. Restoration of the steep slope section with a partially reinforced fluid applied restoration. See Project Manual for full details.

GALEWOOD ELEMENTARY:

1. Retrofit over the existing roof system with a 2-ply sbs modified asphalt system with an aluminized coating. See Project Manual for full details.

LOCATION MAP



CHARLOTTE PUBLIC SCHOOLS

**378 STATE ST.
CHARLOTTE, MI 48813**

REPORT GENERATED BY:

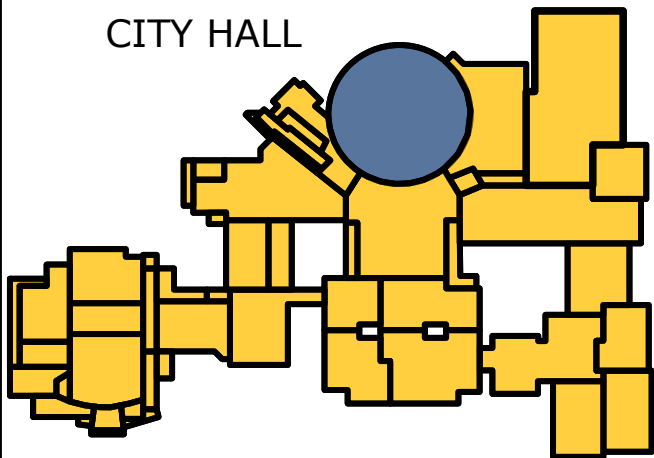
THE GARLAND COMPANY



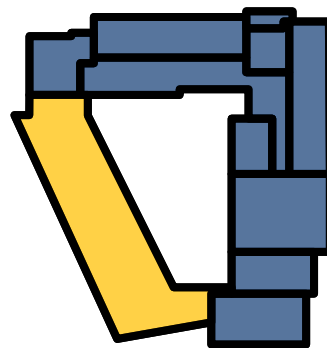
APPROVED FOR
BIDDING

SITE MAP

CITY HALL



GALEWOOD



NOTES

ALL COMMENTS, RECOMMENDATIONS, AND ANALYSIS ARE THE OPINIONS OF THE INDIVIDUALS COMPLETING THE INSPECTION. THEY DO NOT CONSTITUTE THE OFFICIAL POSITION OF THE GARLAND COMPANY. THIS REPORT WAS NOT GENERATED BY AN ARCHITECT, ENGINEER, OR CONSULTANT AND DOES NOT HAVE INDEPENDENT TESTING DATA.

THIS REPORT DOES NOT MAKE ANY CLAIM ON WHAT A MANUFACTURER CAN, OR WILL, DETERMINE TO BE PROPER OR IMPROPER DETAILS OR METHODS. NOR CAN IT MAKE A DETERMINATION ON WHAT A CONTRACTOR OR MANUFACTURER WILL, OR WILL NOT, WARRANTY.

DRAWING INDEX

- A1 - COVER PAGE
- A2 - ROOF PLAN - HIGH SCHOOL
- A2.1 - ROOF PLAN - GALEWOOD
- A3 - DRAWING - HIGH SCHOOL
- A3.1 - DRAWING - GALEWOOD
- T1 - THERMAL IMAGING
- D1 - DETAILS - HIGH SCHOOL
- D2 - DETAILS - GALEWOOD

BUILDING OVERVIEW

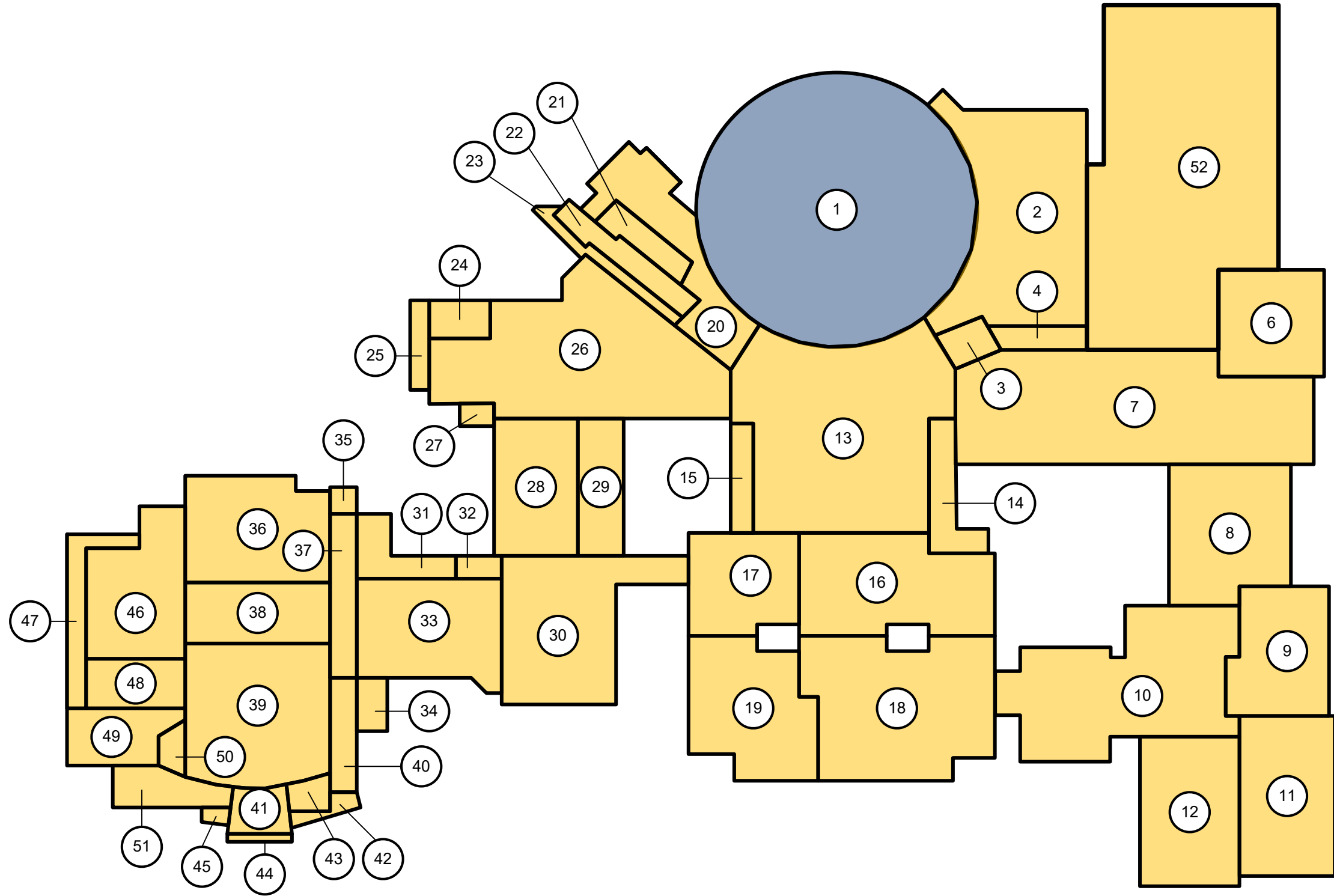


CHARLOTTE PUBLIC SCHOOLS
378 STATE ST
CHARLOTTE, MI 48813

SHEET TITLE:
COVER SHEET

SHEET NO.
A1

HIGH SCHOOL OVERVIEW



2024 ROOFING
 NOT INCLUDED

Section #1	29,000 SF	Section #11	6,300 SF	Section #21	1,200 SF	Section #31	1,450 SF	Section #41	1,100 SF
Section #2	11,000 SF	Section #12	6,000 SF	Section #22	1,550 SF	Section #32	400 SF	Section #42	450 SF
Section #3	720 SF	Section #13	15,200 SF	Section #23	1,000 SF	Section #33	5,700 SF	Section #43	450 SF
Section #4	950 SF	Section #14	1,750 SF	Section #24	900 SF	Section #34	500 SF	Section #44	250 SF
Section #6	4,300 SF	Section #15	900 SF	Section #25	750 SF	Section #35	150 SF	Section #45	150 SF
Section #7	15,700 SF	Section #16	7,700 SF	Section #26	13,000 SF	Section #36	6,200 SF	Section #46	5,400 SF
Section #8	6,400 SF	Section #17	4,300 SF	Section #27	350 SF	Section #37	1,350 SF	Section #47	1,400 SF
Section #9	5,050 SF	Section #18	10,100 SF	Section #28	4,200 SF	Section #38	3,400 SF	Section #48	1,900 SF
Section #10	10,900 SF	Section #19	6,400 SF	Section #29	2,700 SF	Section #39	8,100 SF	Section #49	2,500 SF
		Section #20	4,300 SF	Section #30	8,200 SF	Section #40	800 SF	Section #50	450 SF
								Section #51	1,800 SF
								Section #52	22,000 SF



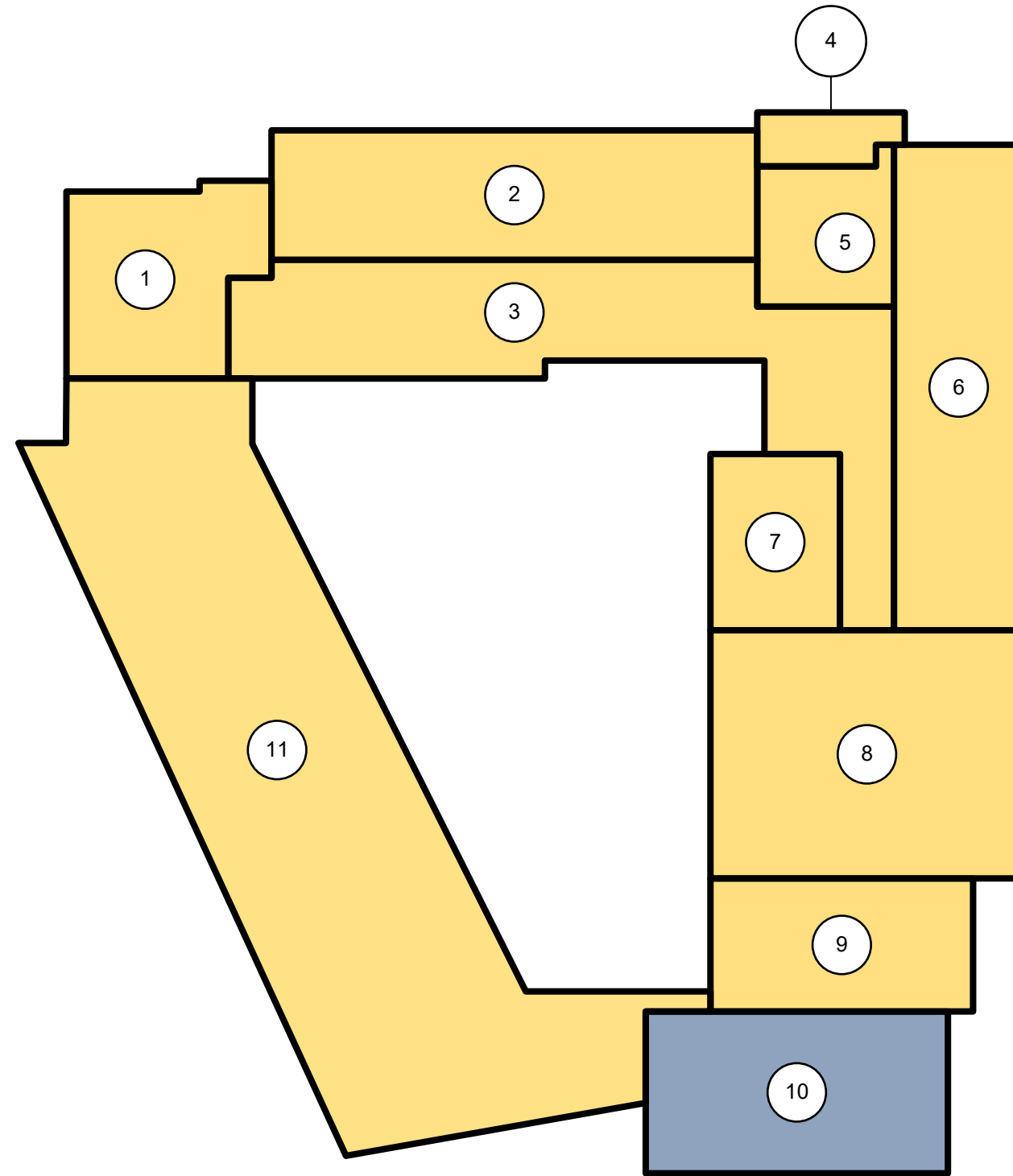
APPROVED FOR BIDDING

CHARLOTTE PUBLIC SCHOOLS
 378 STATE ST
 CHARLOTTE, MI 48813

SHEET TITLE:
ROOF PLAN

SHEET NO.
A2

GALEWOOD ELEMENTARY



- 2024 ROOFING
- NOT INCLUDED

Section #1	2,300 SF
Section #2	4,150 SF
Section #3	5,000 SF
Section #4	500 SF
Section #5	1,200 SF
Section #6	4,000 SF
Section #7	1,600 SF
Section #8	5,000 SF
Section #9	2,500 SF
Section #10	3,100 SF
Section #11	9,200 SF



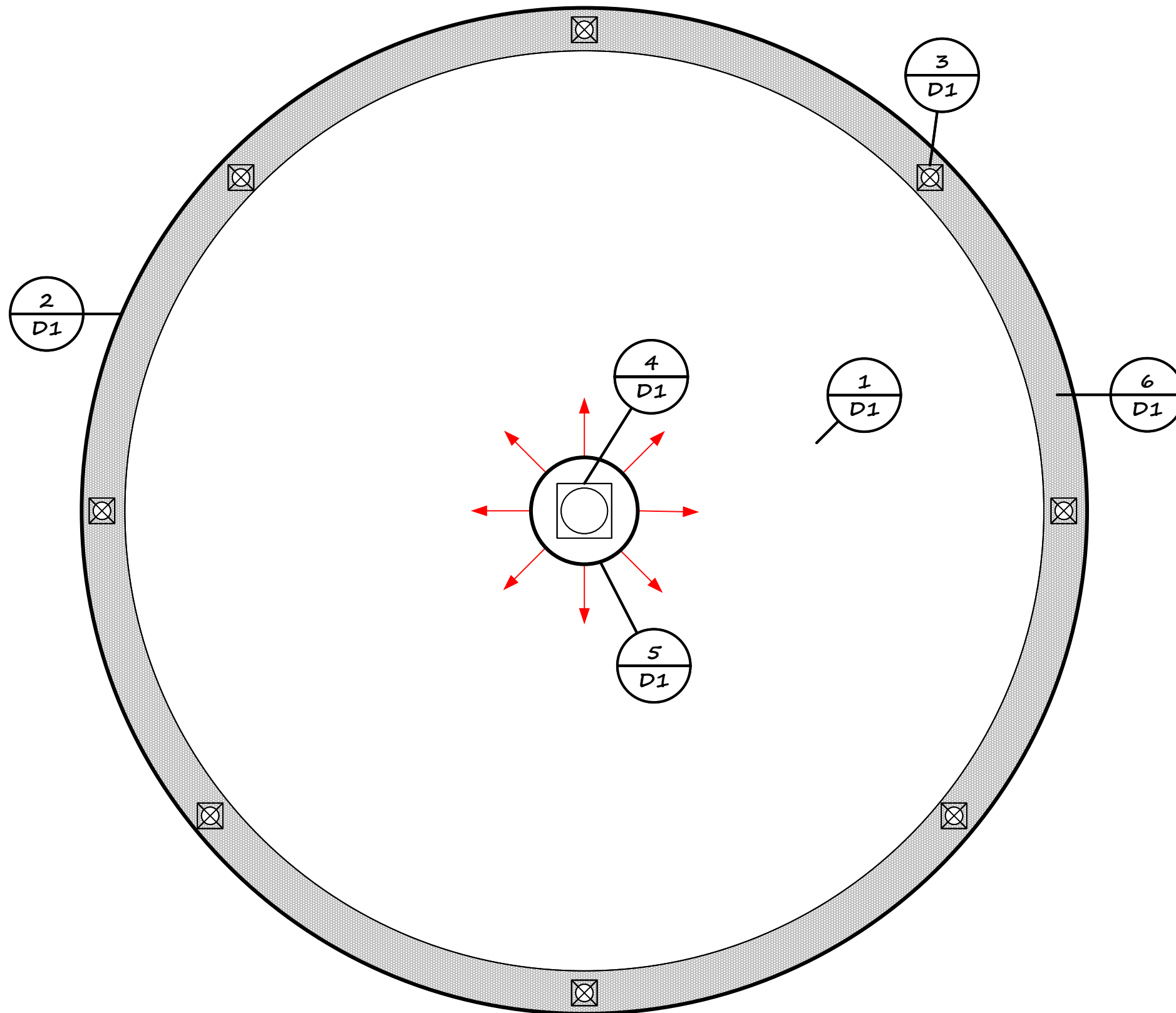
APPROVED FOR BIDDING

CHARLOTTE PUBLIC SCHOOLS
 378 STATE ST
 CHARLOTTE, MI 48813

SHEET TITLE:
 ROOF PLAN

SHEET NO.
 A2.1

ROOF DRAWINGS:
HIGH SCHOOL



LEGEND	
	DRAIN
	EXHAUST
	CHIMNEY
	LADDER
	CURB
	PIPE / PENETRATION
	ROUND CURB PENETRATION
	TAPERED INSULATION
	HVAC UNIT

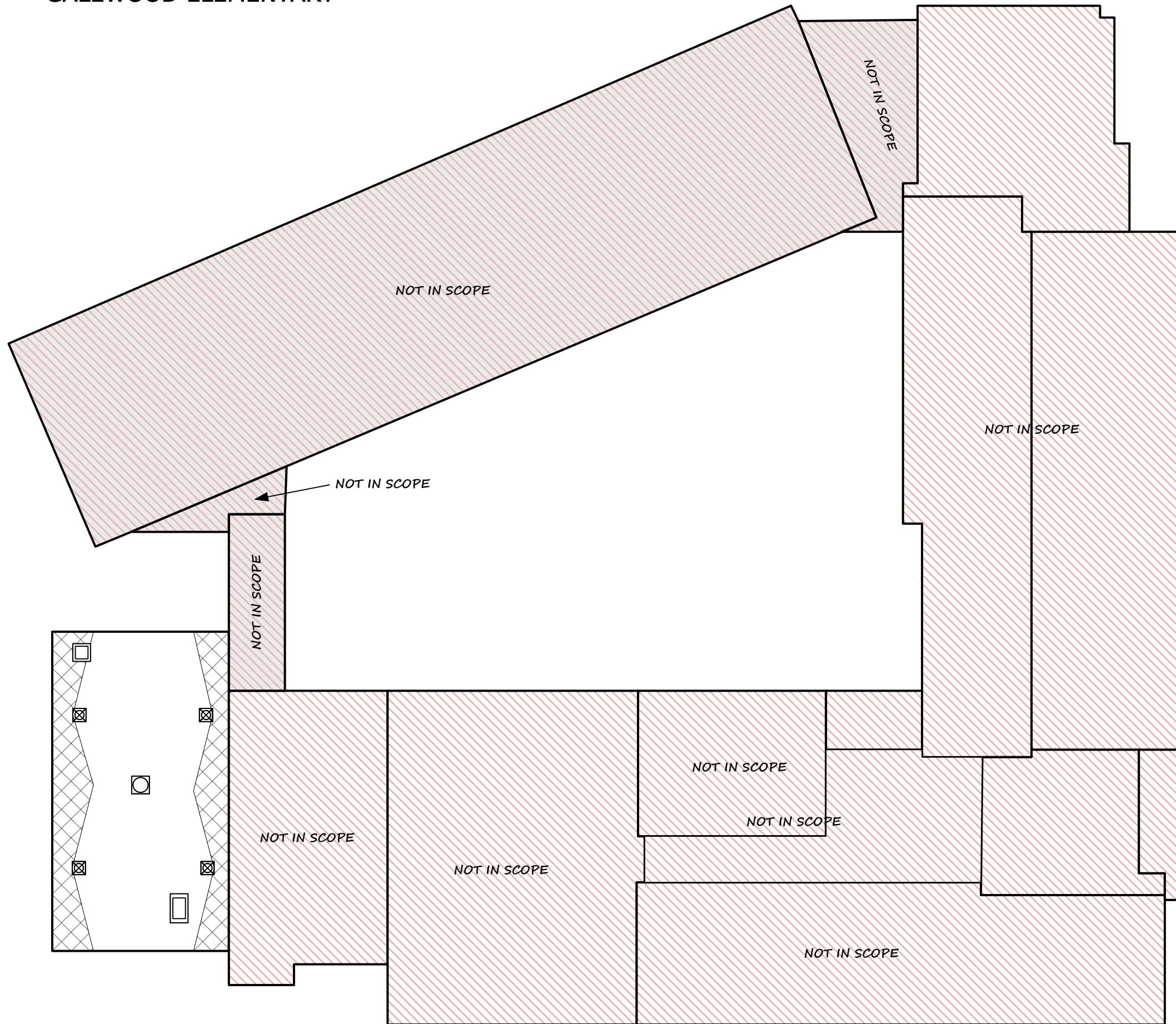
APPROVED FOR
BIDDING

CHARLOTTE PUBLIC SCHOOLS
378 STATE ST
CHARLOTTE, MI 48813

SHEET TITLE:
ROOF
DRAWING

SHEET NO.
A3

**ROOF DRAWINGS:
GALEWOOD ELEMENTARY**



APPROVED FOR
BIDDING

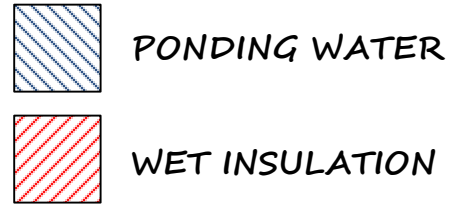
CHARLOTTE PUBLIC SCHOOLS
378 STATE ST
CHARLOTTE, MI 48813

SHEET TITLE:
ROOF
DRAWING

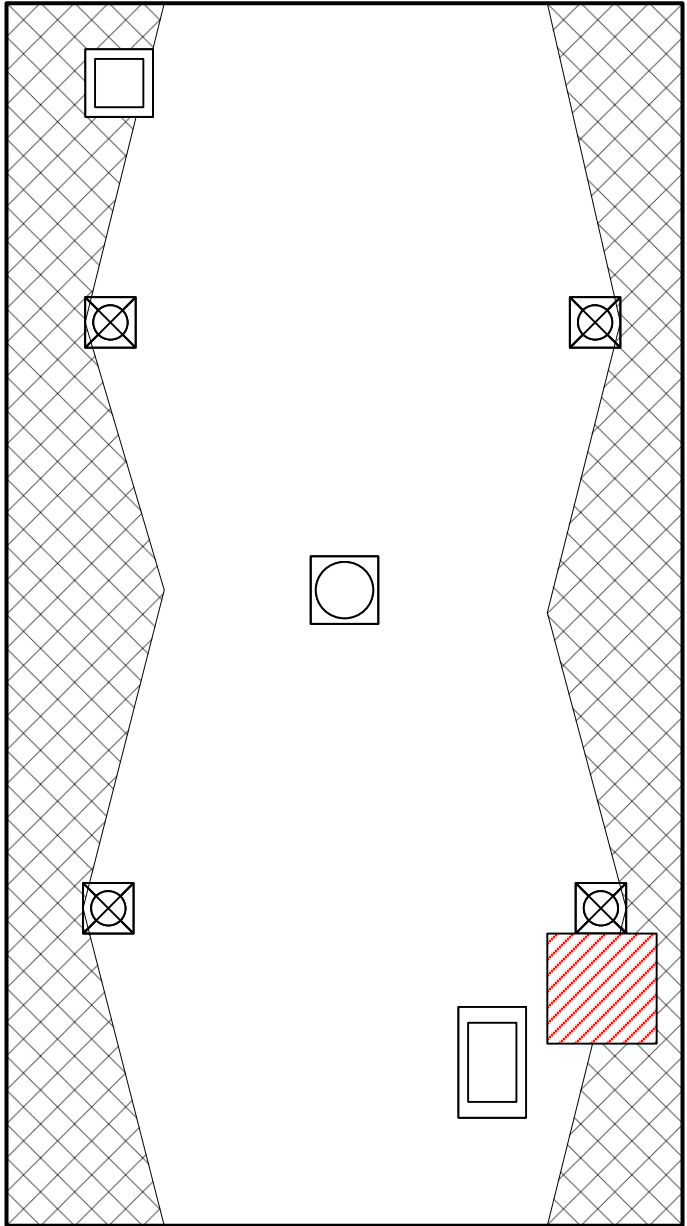
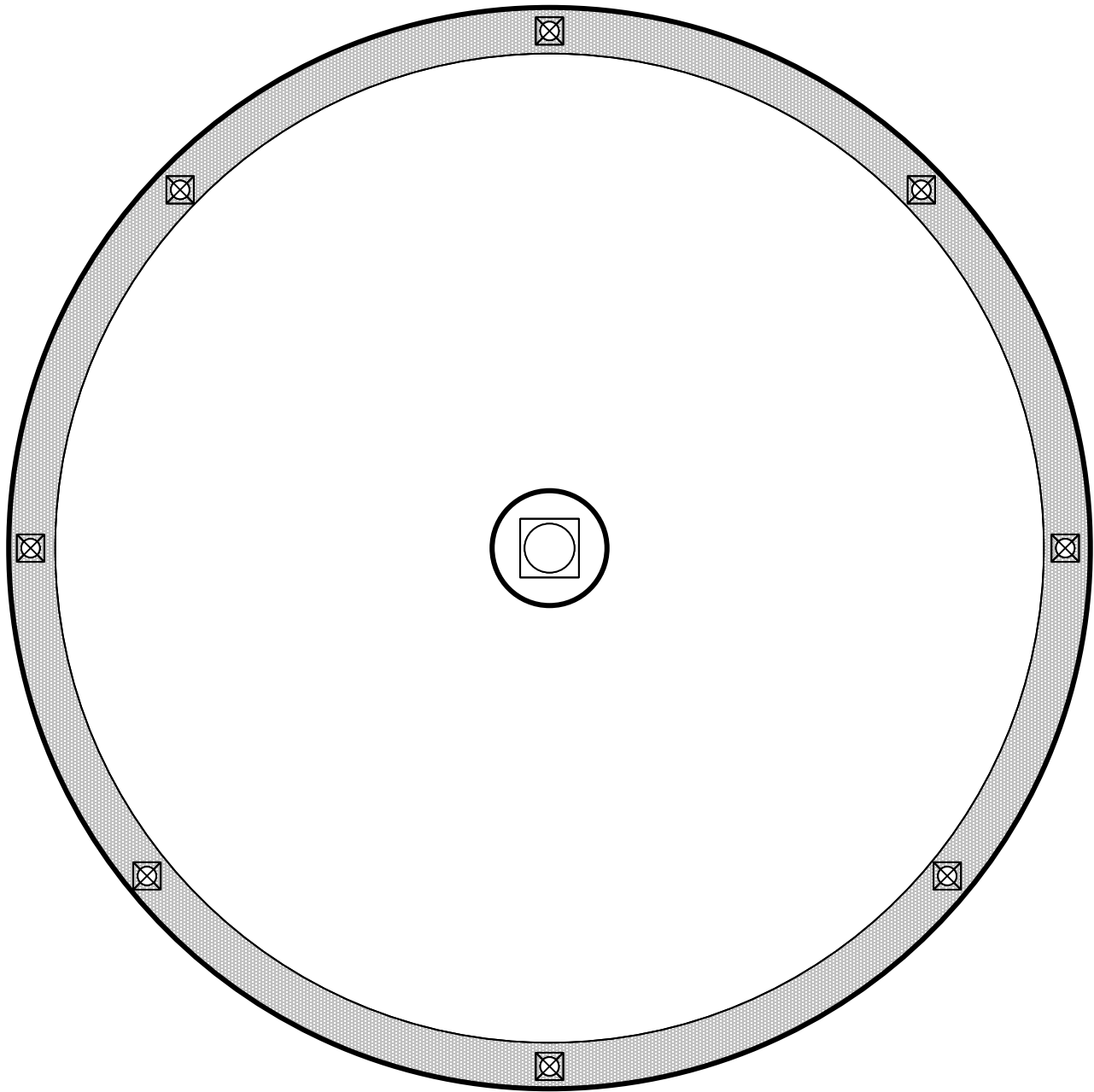
SHEET NO.
A3.1

LEGEND	
	DRAIN
	EXHAUST
	CHIMNEY
	LADDER
	CURB
	PIPE / PENETRATION
	ROUND CURB PENETRATION
	TAPERED INSULATION
	HVAC UNIT

**THERMAL SCAN RESULTS:
2024 ROOFING**



THERMAL SCAN INFORMATION:
SECTION:
TOTAL:
WET INSULATION:
>100 SF

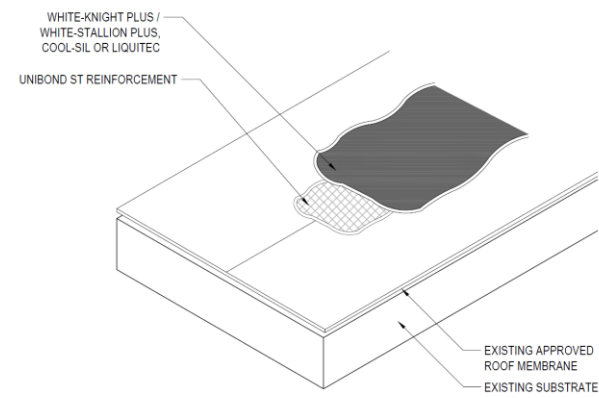


APPROVED FOR
BIDDING

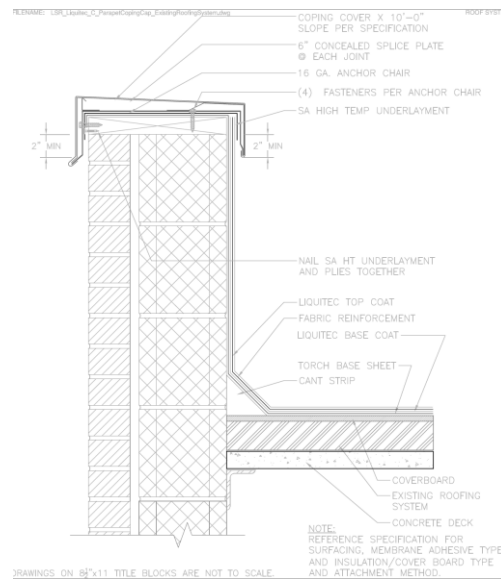
CHARLOTTE PUBLIC SCHOOLS
378 STATE ST
CHARLOTTE, MI 48813

SHEET TITLE:
THERMAL
IMAGING

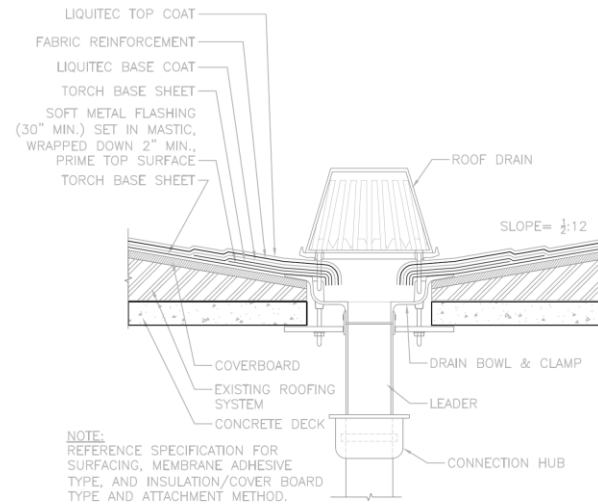
SHEET NO.
T1



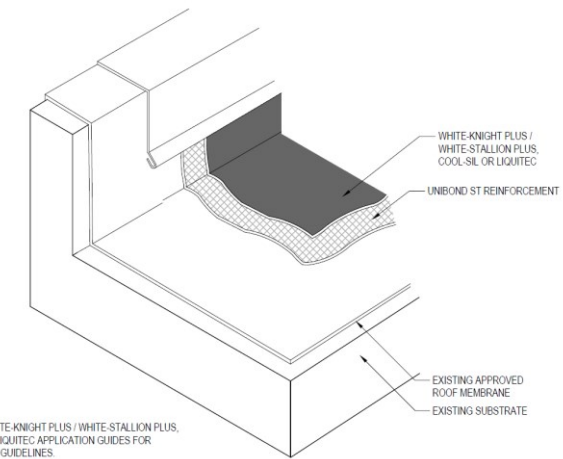
NOTE:
1. REFER TO WHITE-KNIGHT PLUS / WHITE-STALLION PLUS, COOL-SIL OR LIQUITEC APPLICATION GUIDES FOR INSTALLATION GUIDELINES.



NOTE:
REFERENCE SPECIFICATION FOR SURFACING, MEMBRANE ADHESIVE TYPE, AND INSULATION/COVER BOARD TYPE AND ATTACHMENT METHOD.



NOTE:
REFERENCE SPECIFICATION FOR SURFACING, MEMBRANE ADHESIVE TYPE, AND INSULATION/COVER BOARD TYPE AND ATTACHMENT METHOD.



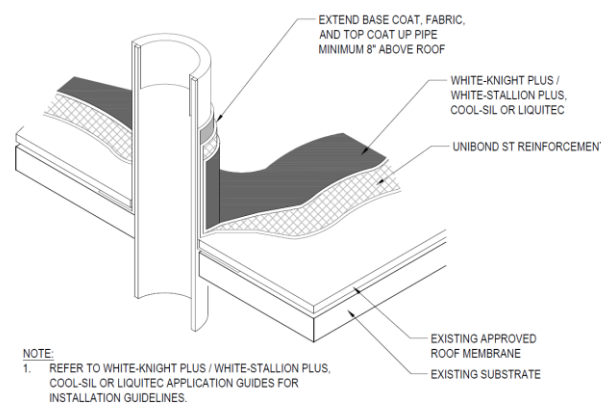
NOTE:
1. REFER TO WHITE-KNIGHT PLUS / WHITE-STALLION PLUS, COOL-SIL OR LIQUITEC APPLICATION GUIDES FOR INSTALLATION GUIDELINES.

1
D1 DOME FIELD DETAIL
N.T.S.

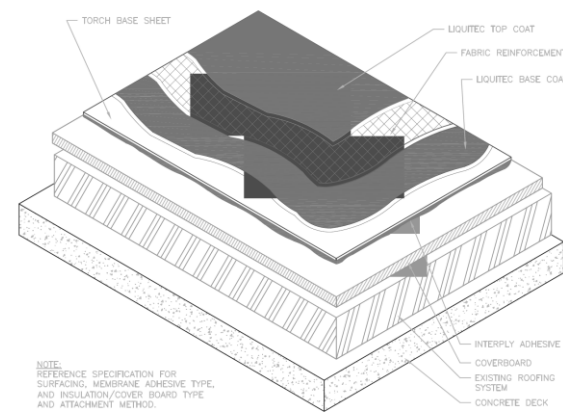
2
D1 PERIMETER EDGE DETAIL
N.T.S.

3
D1 DRAIN DETAIL
N.T.S.

4
D1 EXHAUST FAN DETAIL
N.T.S.



NOTE:
1. REFER TO WHITE-KNIGHT PLUS / WHITE-STALLION PLUS, COOL-SIL OR LIQUITEC APPLICATION GUIDES FOR INSTALLATION GUIDELINES.



NOTE:
REFERENCE SPECIFICATION FOR SURFACING, MEMBRANE ADHESIVE TYPE, AND INSULATION/COVER BOARD TYPE AND ATTACHMENT METHOD.

5
D1 SCREEN WALL PENETRATION DETAIL
N.T.S.

6
D1 VALLEY FIELD DETAIL
N.T.S.

Detail Requirements

- 1) Details shown are representative of finished details. Contractors shall take into account existing insulation, new insulation, and the new roof system. Wood blocking shall be added to achieve the minimum flashing heights shown.
- 2) Deck types vary between roof areas and buildings. Contractor must verify roof decks and apply details accordingly.

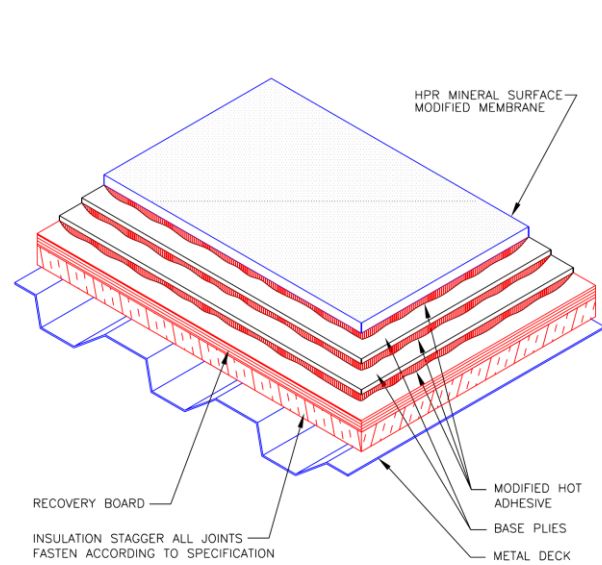
APPROVED FOR
BIDDING

CHARLOTTE PUBLIC SCHOOLS
378 STATE ST
CHARLOTTE, MI 48813

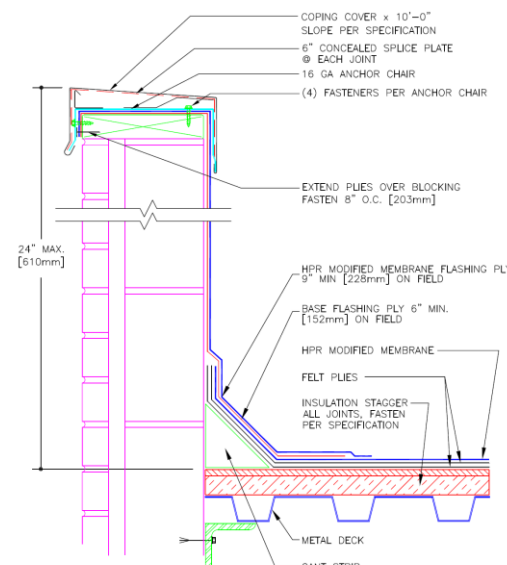
SHEET TITLE:
HIGH
SCHOOL
DETAILS

SHEET NO.

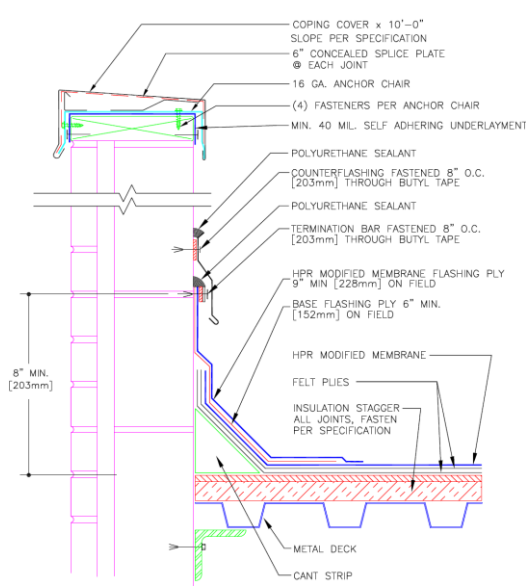
D1



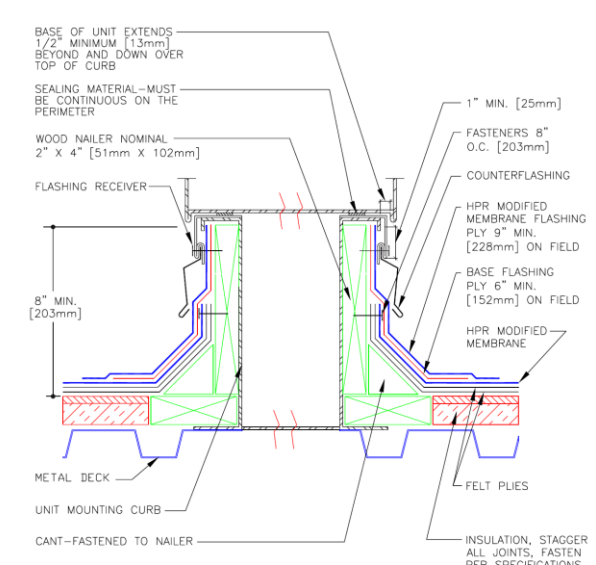
1 TYPICAL MINERAL FINISH
D2 N.T.S.



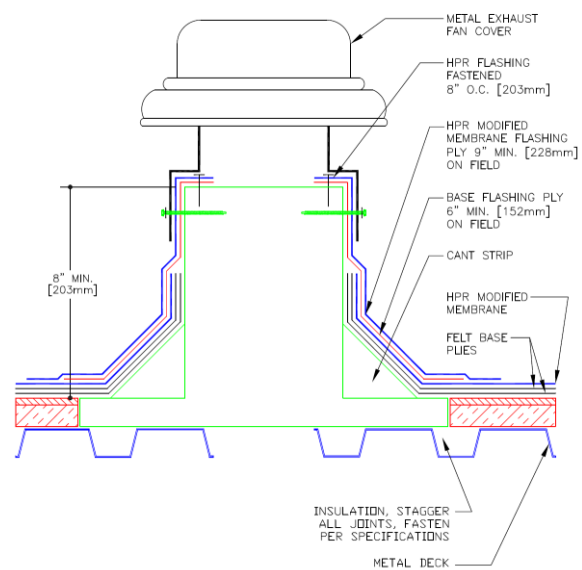
2 COPING CAP
D2 N.T.S.



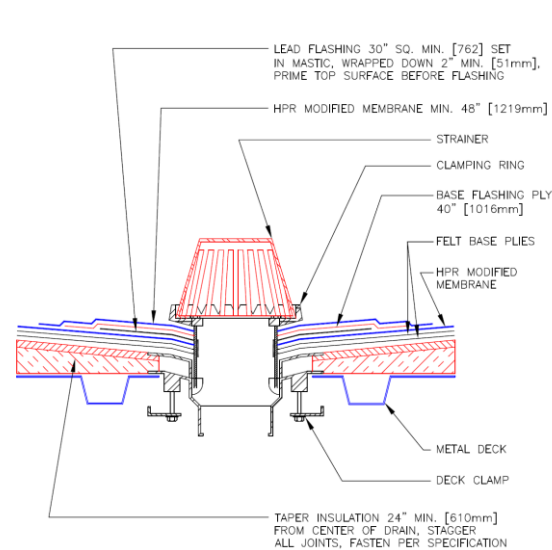
3 SURFACE MOUNTED COUNTERFLASHING
D2 N.T.S.



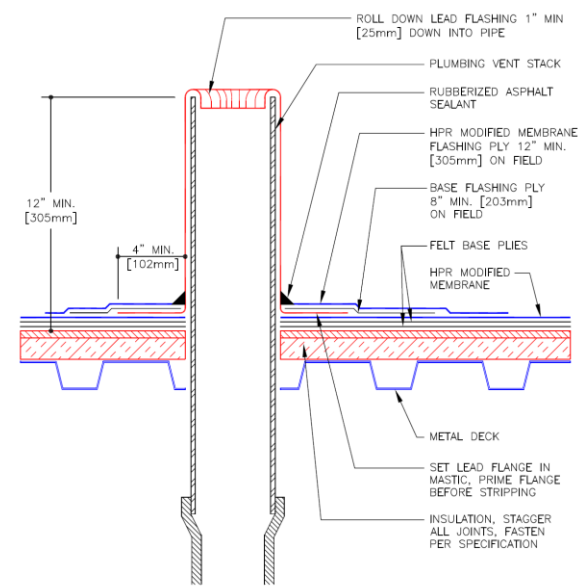
4 CURB DETAIL
D2 N.T.S.



5 EXHAUST FAN
D2 N.T.S.



6 ROOF DRAIN
D2 N.T.S.



7 PLUMBING STACK
D2 N.T.S.

Detail Requirements

- Details shown are representative of finished details. Contractors shall take into account existing insulation, new insulation, and the new roof system. Wood blocking shall be added to achieve the minimum flashing heights shown.
- Deck types vary between roof areas and buildings. Contractor must verify roof decks and apply details accordingly.