

Health-e Pro

An idea brought to life

My School Menus

Tutorial on Filtering Allergens!

Download our Digital Menus!



**Once you download
My School Menus,
select the school and
the menu you would
like to view.**

Welcome! It's simple to get started:

What is the name of your school?

Parkview Elementary



Which menu would you like to view?

Charlotte Elementary Schools Breakfast Menu (25-26)



Go

Powered By Health-e Pro

Health-e Pro 

[Terms of Service](#) | [Privacy Policy](#) | [Accessibility](#) | © 2025

[Charlotte Public Schools](#)

August

Charlotte Elementary Schools Breakfast Menu (25-26)

It will bring you to the monthly menu. Select any entree and an image of the item along with allergen information will appear (see next slide).

| TUESDAY | WEDNESDAY | THURSDAY | FRIDAY |
|----------------------------------------------------------------------------------------------------------------------------------------------------------------|---------------------------------------------------------------------------------------------------------------------------------------------------------------------------------------|------------------------------------------------------------------------------------------------------------------------------------------------------------------------------------|--------------------------------------------------------------------------------------------------------------------------------------------------------------------------------------------------|
| 5 | 6 | 7 | 8 |
| 12 | 13 | 14 | 15 |
| 18 | 19 | 20 | 21 |
| Breakfast Entree Cinnamon Ultimate Breakfast Round And String Cheese Fruit Variety of Fresh Fruit Juice Variety Milk | Breakfast Entree Double Chocolate Oatmeal Bar And Yogurt Variety Fruit Variety of Fresh Fruit Juice Variety Milk Chocolate Fat Free Milk | Breakfast Entree Mini Blueberry Donut Holes And String Cheese Fruit Variety of Fresh Fruit Juice Variety Milk Chocolate Fat Free Milk | Breakfast Entree Breakfast Breaks: Lucky Charms, Strawberry Mini Bites, Juice Fruit Variety of Fresh Fruit Milk Chocolate Fat Free Milk Nonfat White Milk |

No School

School

Parkview Elementary

Menu

Charlotte Elementary Schools ...

View


August 2025



Month



Week

 Print Menu Build a Meal Filter Allergens Dietary Preferences

Student Breakfast & Lunch Pricing

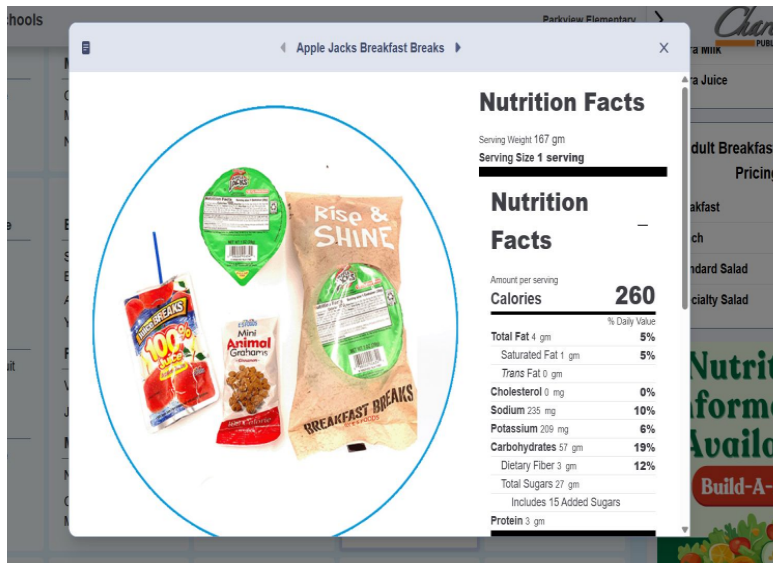
Breakfast - FREE \$0.00

Lunch - FREE \$0.00

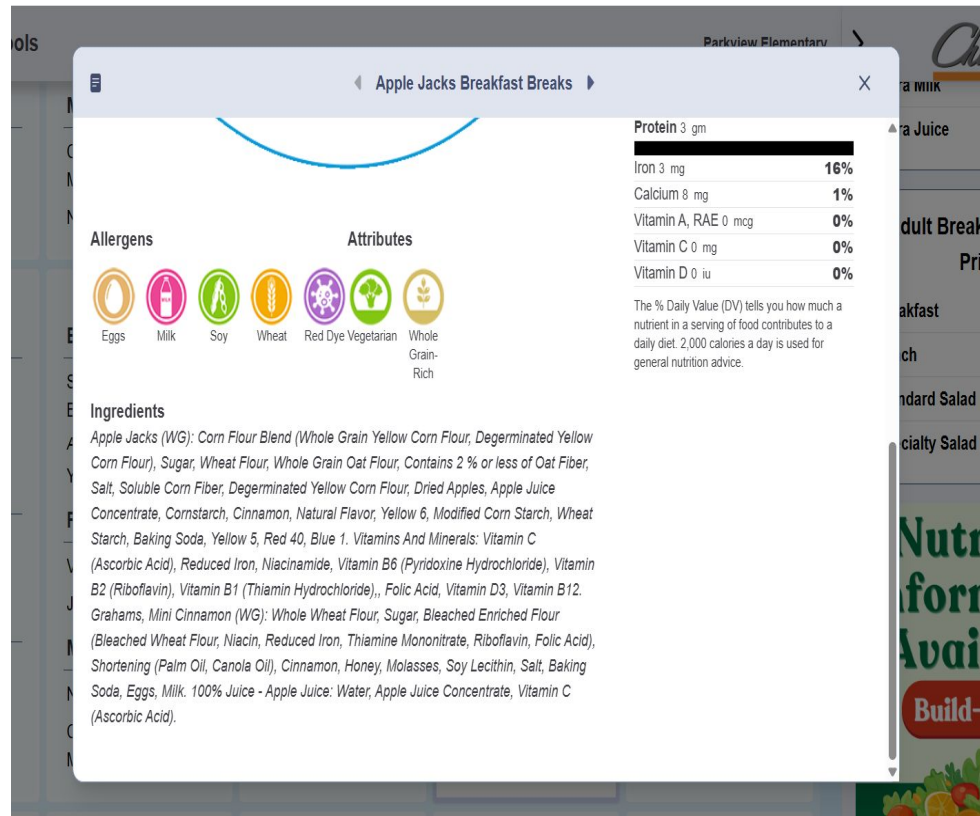
Extra Milk \$0.60

Extra Juice \$0.60

Adult Breakfast & Lunch



Once you select the entree item, an image of that item will appear. Just below will be the ingredients list, allergens and nutrition facts label.





Student Breakfast & Lunch Pricing

| | |
|------------------|--------|
| Breakfast - FREE | \$0.00 |
| Lunch - FREE | \$0.00 |
| Extra Milk | \$0.60 |

You may also filter allergens by clicking the “filter allergens” button on the right hand side.

MONDAY

TUESDAY

WEDNESDAY

4

5

6

11

12

13

18

Breakfast Entree

Cinnamon Ultimate
Breakfast Round

And

String Cheese

Fruit

Variety of Fresh Fruit
Juice Variety

Milk

19

Breakfast Entree

Double Chocolate
Oatmeal Bar

And

Yogurt Variety

Fruit

Variety of Fresh Fruit
Juice Variety

Milk

20

Breakfast Entree

Mini Blueberry Donut
Holes

And

String Cheese

Fruit

Variety of Fresh Fruit
Juice Variety

Milk

21

Breakfast Entree

Breakfast Breaks:
Lucky Charms,
Strawberry Mini Bites,
Juice

Fruit

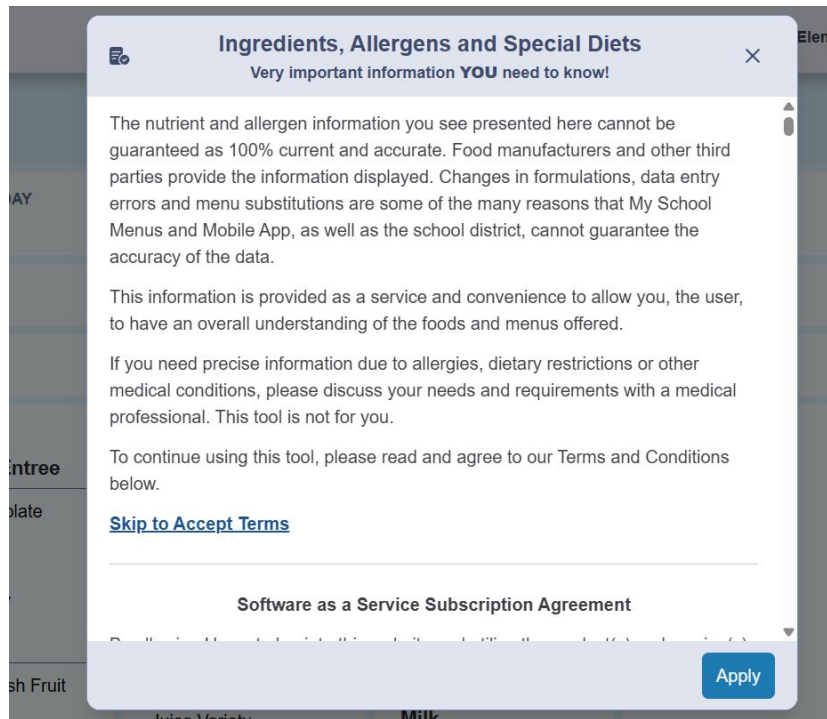
Variety of Fresh Fruit

Milk

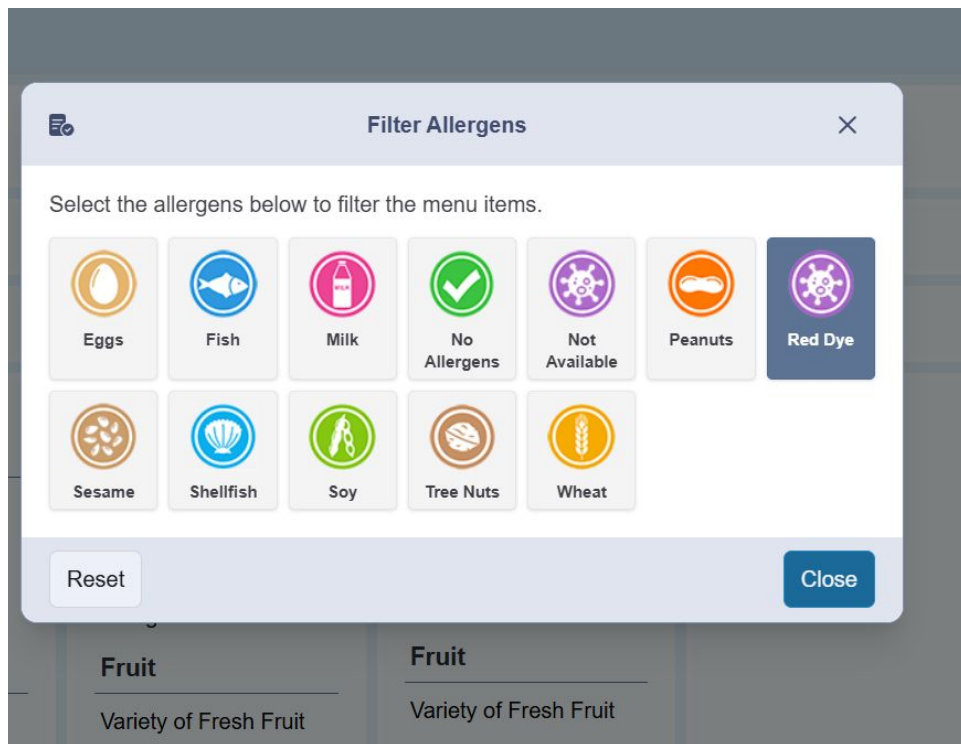
Chocolate Fat Free

22

No School



**Select “apply” and
then select the
allergen you would
like to filter.**



| | | | | |
|-------------------------|----------------------------|-------------------------|-----------------------------------------|------------------|
| Nonfat White Milk | Nonfat White Milk | Nonfat White Milk | | |
| 25 | 26 | 27 | 28 | 29 |
| Breakfast Entree | Breakfast Entree | Breakfast Entree | Breakfast Entree | <i>No School</i> |
| Lemon Bread | Strawberry Nutri-Grain Bar | Blueberry Muffin | Apple Jacks Breakfast Breaks | |
| And | And | And | | |
| String Cheese | Yogurt Variety | String Cheese | Fruit | |
| Fruit | Fruit | Fruit | Variety of Fresh Fruit | |
| Variety of Fresh Fruit | Variety of Fresh Fruit | Variety of Fresh Fruit | Milk | |
| Juice Variety | Juice Variety | Juice Variety | Chocolate Fat Free Milk | |
| Milk | Milk | Milk | Nonfat White Milk | |
| Chocolate Fat Free Milk | Nonfat White Milk | Chocolate Fat Free Milk | | |
| Nonfat White Milk | Chocolate Fat Free Milk | Nonfat White Milk | | |
| | | | | |
| | | | | |

Adult Breakfast & Lunch Pricing

| | |
|----------------|--------|
| Breakfast | \$3.50 |
| Lunch | \$6.00 |
| Standard Salad | \$6.00 |
| | \$7.00 |

**All of the crossed out items contain the allergen that was filtered
(Ex: Apple Jacks cereal contains red dye)**

**trition
rmation
ailable**

ld-A-Meal



Questions?

Contact me!

wietzkl@charlottenet.org

Phone 517-541-5700 ext. 2904